

**Compound Weaves with  
Supplementary Sets:  
Unit Weaves**

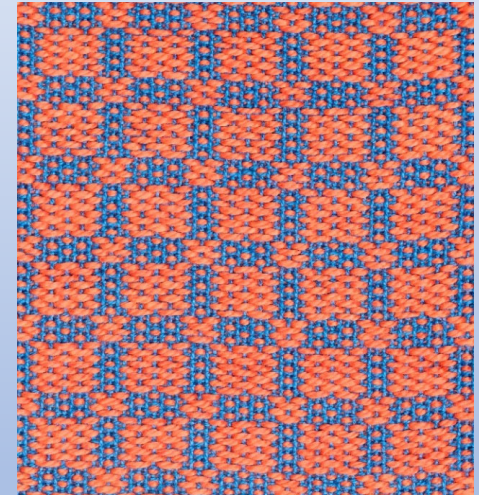
**Marcy Petrini**

**A Weaving Year of Wonder Study Group**

**June 21, 2021**

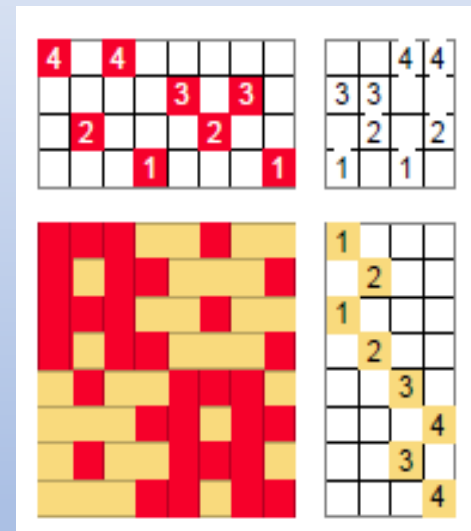
# Unit Weaves

- **Supplementary weft-float patterning**
- **Background fabric, often tabby, but not always**
- **Patterning weft heavier and loftier**
- **Floats anchored (“tied”)**
- **Each block is fixed in width**
- **Blocks can be repeated**
- **Blocks are independent (don’t share pattern shafts)**



# Summer and Winter

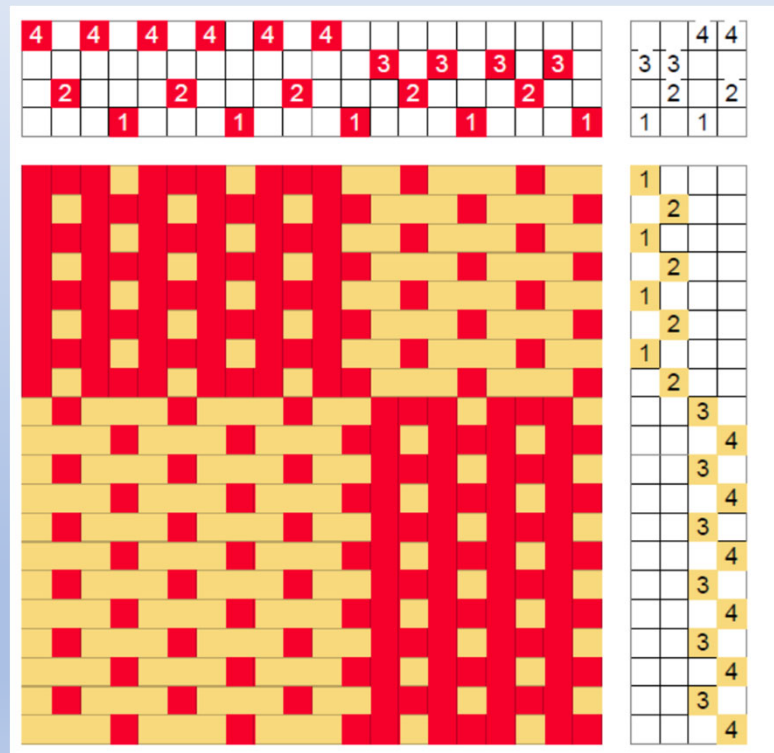
- Two blocks on 4 shafts
- Two tie-down shafts, 1 and 2
- One pattern shaft per block
- Note sinking shed



# Comparing Overshot with Summer and Winter

<b>Overshot</b>	<b>Summer &amp; Winter</b>
<b>Variable blocks, determines float</b>	<b>Fixed block, float anchored, no more than 3 threads</b>
<b>Shared shafts</b>	<b>No pattern shafts shared</b>
<b>4 blocks on 4 shafts</b>	<b>2 blocks on 4 shafts</b>
<b>1 pattern pick per block, square the block</b>	<b>2 pattern picks per block, repeat in sets to square</b>
<b>Tabby odd vs. even</b>	<b>Tie-down shafts vs. pattern shafts</b>
<b>Blocks cannot be repeated, float too long</b>	<b>Blocks can be repeated, tie-down threads stop float</b>
<b>Blocks cannot be combined in treading</b>	<b>Blocks can be combined in treading</b>

# Blocks Can Be Repeated

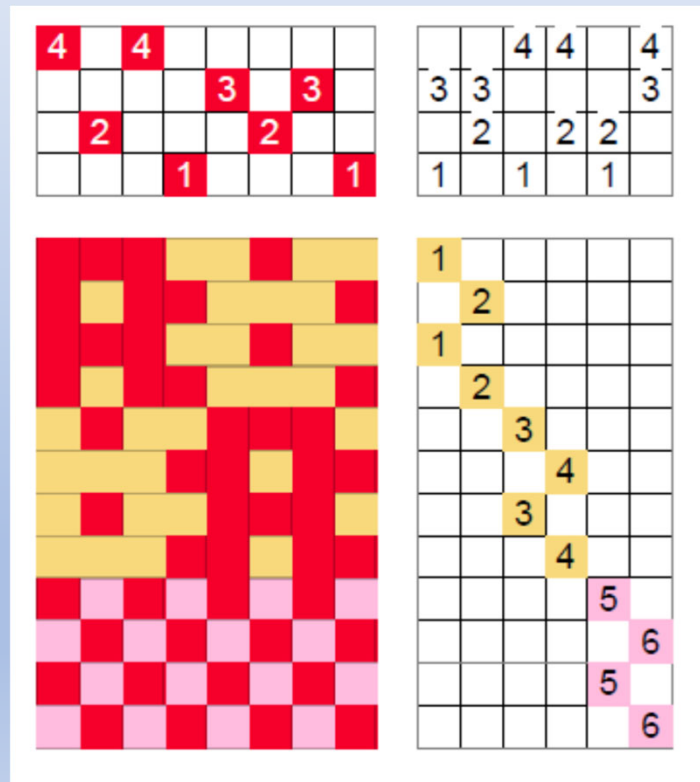


# Ground Tabby

- **Every other thread for tabby: 1, 2, 1, 2**
- **Alternate every other thread: 3, 3, 4, 4**
- **Tabby treading: 1 & 2 vs. 3 & 4**

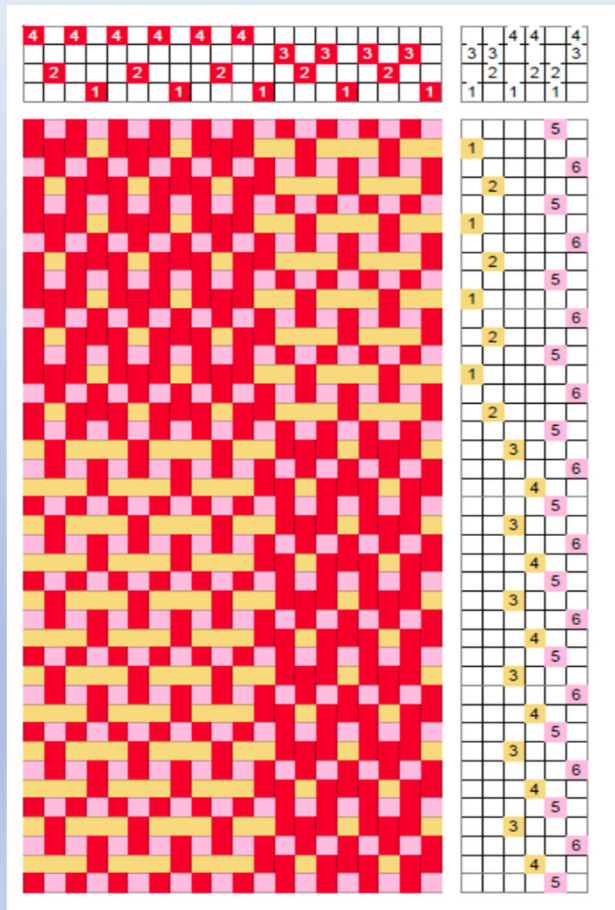
4		4					
				3		3	
	2				2		
			1				1

# Treadling Showing Tabby



# Alternating Tabby with Pattern Picks

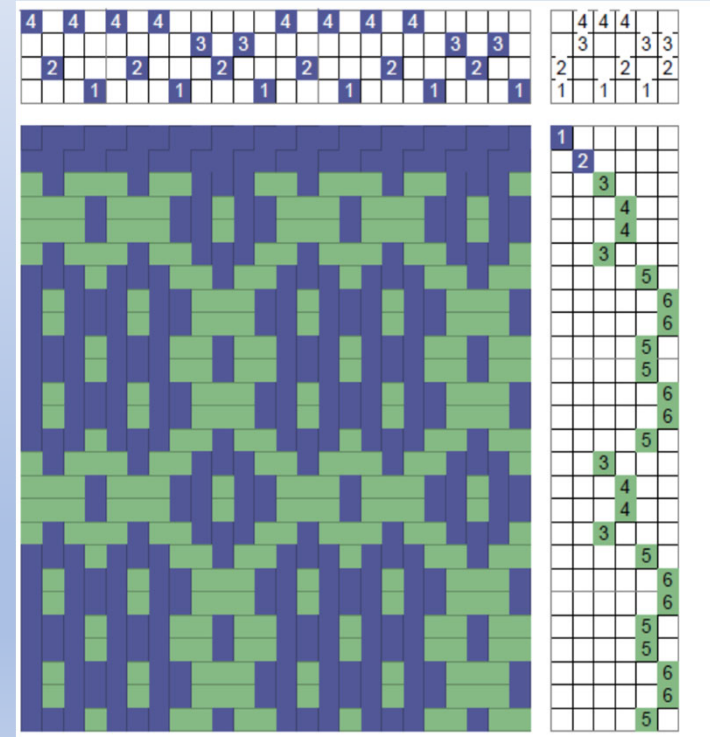
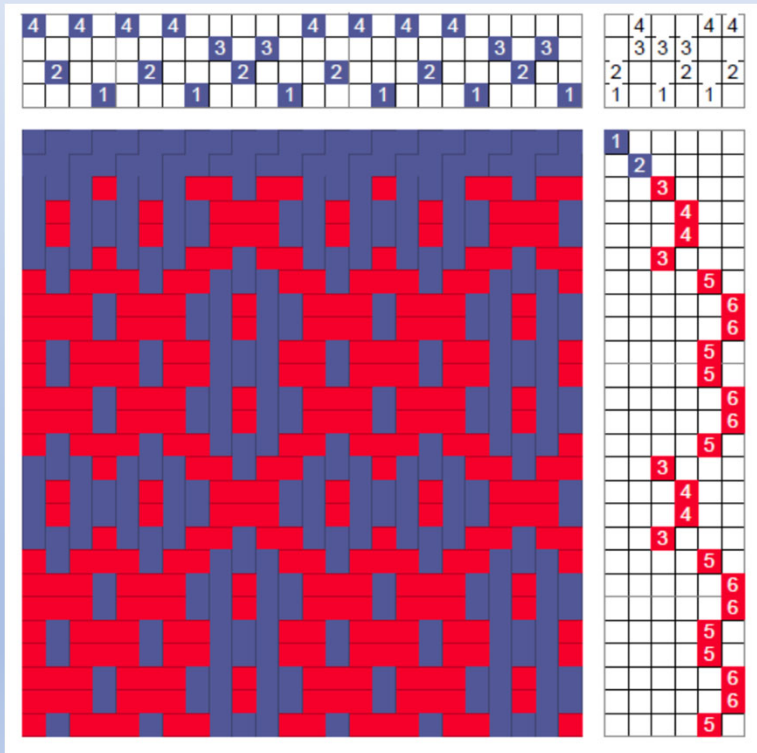
Treading "Singles"







# Treadingling Options: Paired O's and X's



# Converting from Sinking to Rising Shed

**Untie what's tied, tie what's not tied**

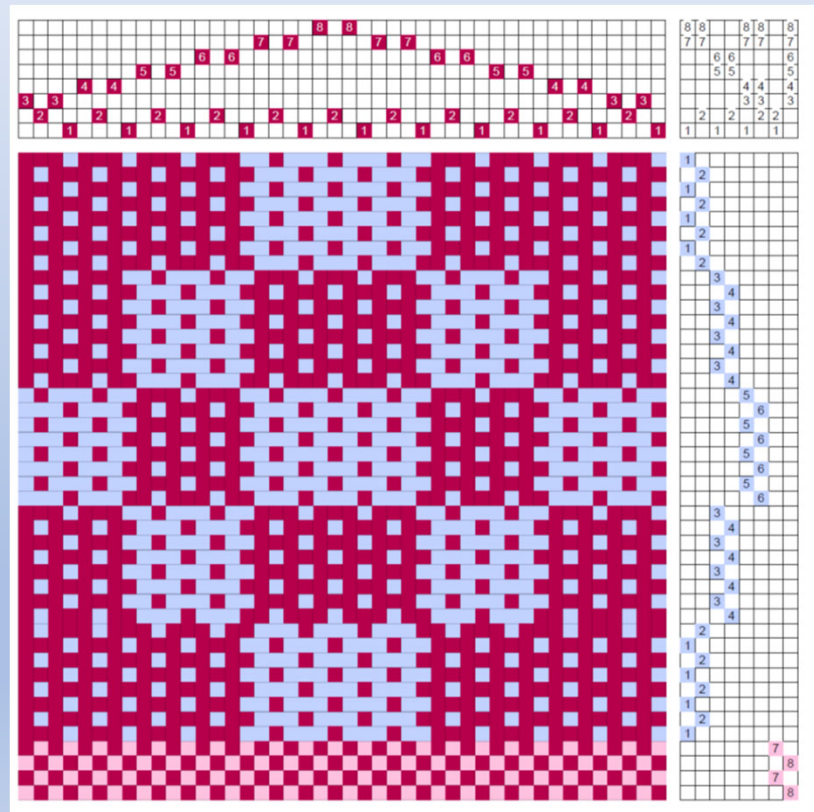
4			X	X		X	X	X
3	X	X				X	X	X
2		X		X	X			X
1	X		X		X		X	
	1	2	3	4	5	6	7	8

0	0			0				
		0	0	0				
0		0			0	0		
	0		0		0		0	
	1	2	3	4	5	6	7	8

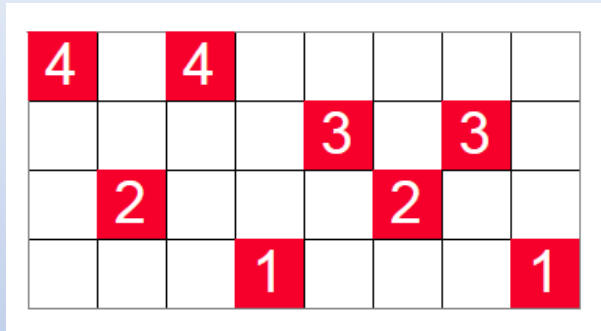


# Blocks Are Usually Combined

- More pleasing design
- Need fewer treadles



# Unit Weaves Nomenclature



- **Summer and winter is single, two-tie, unpaired unit weave with a ratio of 1:1**
- **Single, two-tie unit weave**

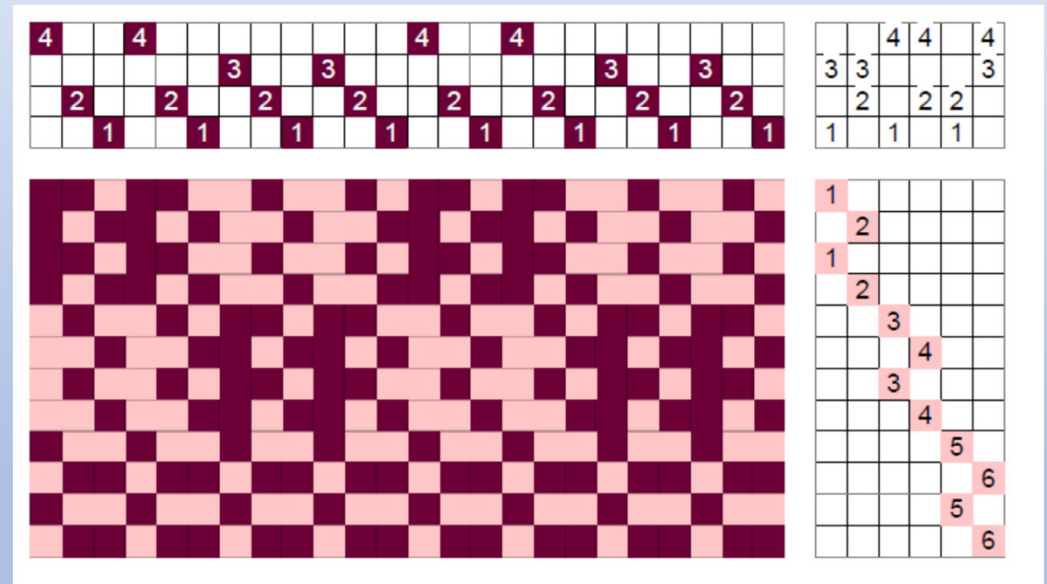
Single, double, etc.	Number of pattern shafts per block
# Tie shafts	Number of shafts for the tie-down threads
Paired or unpaired	Whether the ties are next to each other (paired) or not
Ratio	Tie-down threads to pattern threads within a block

Single	One shaft of pattern per block, 3 for A, 4 for B, 5 for C, etc.
Two-tie	Shafts 1 & 2
Unpaired	Shafts 1 & 2 are separated by the pattern shaft
Ratio of 1: 1	For each tie-down thread, there is a pattern thread



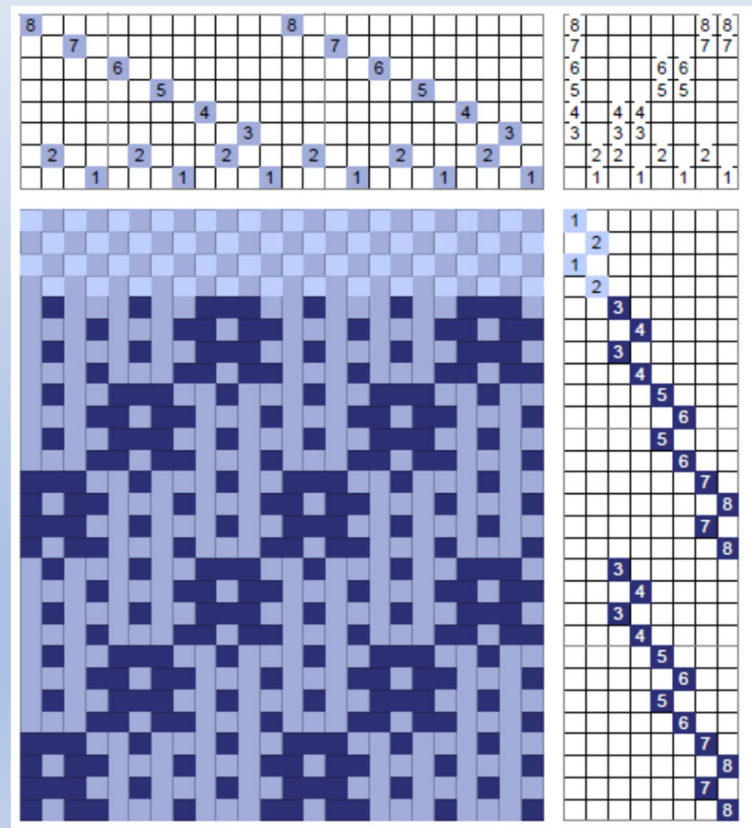
# Pairing is not Successful on 4 Shafts

- No tabby possible, pseudo basket weave formed
- Background floats same as pattern floats



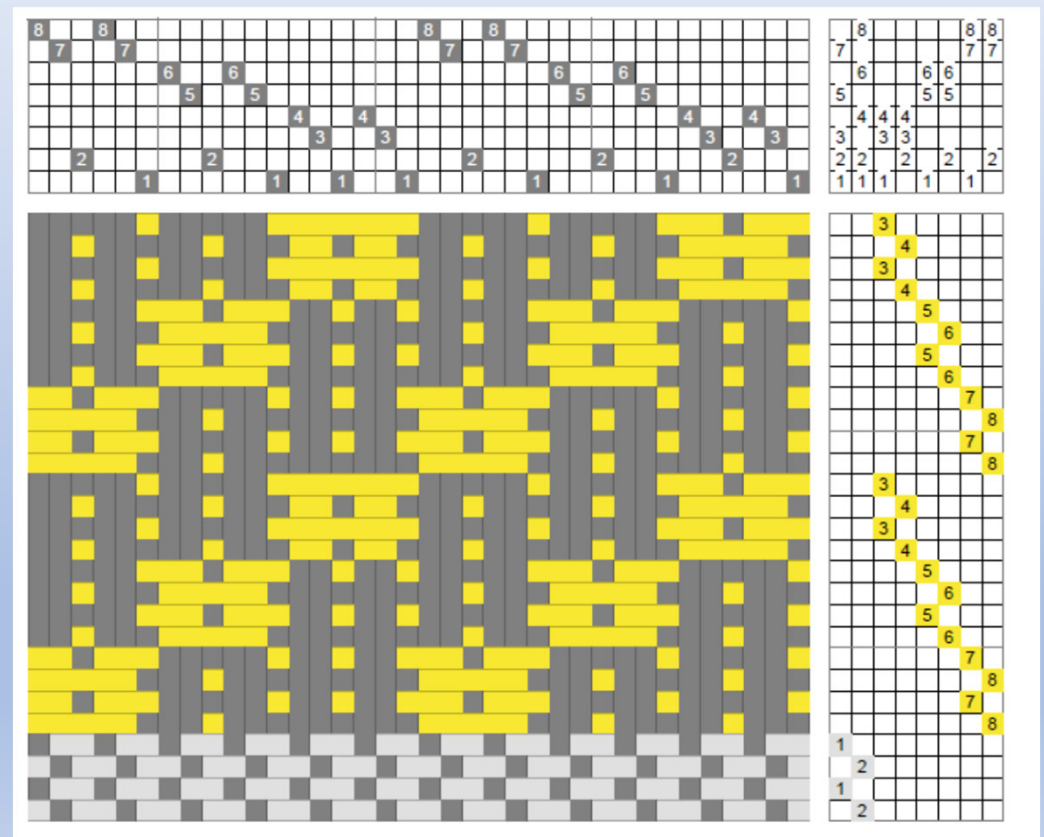


# Double Two-tie Unpaired Unit Weave, Ratio 1:1



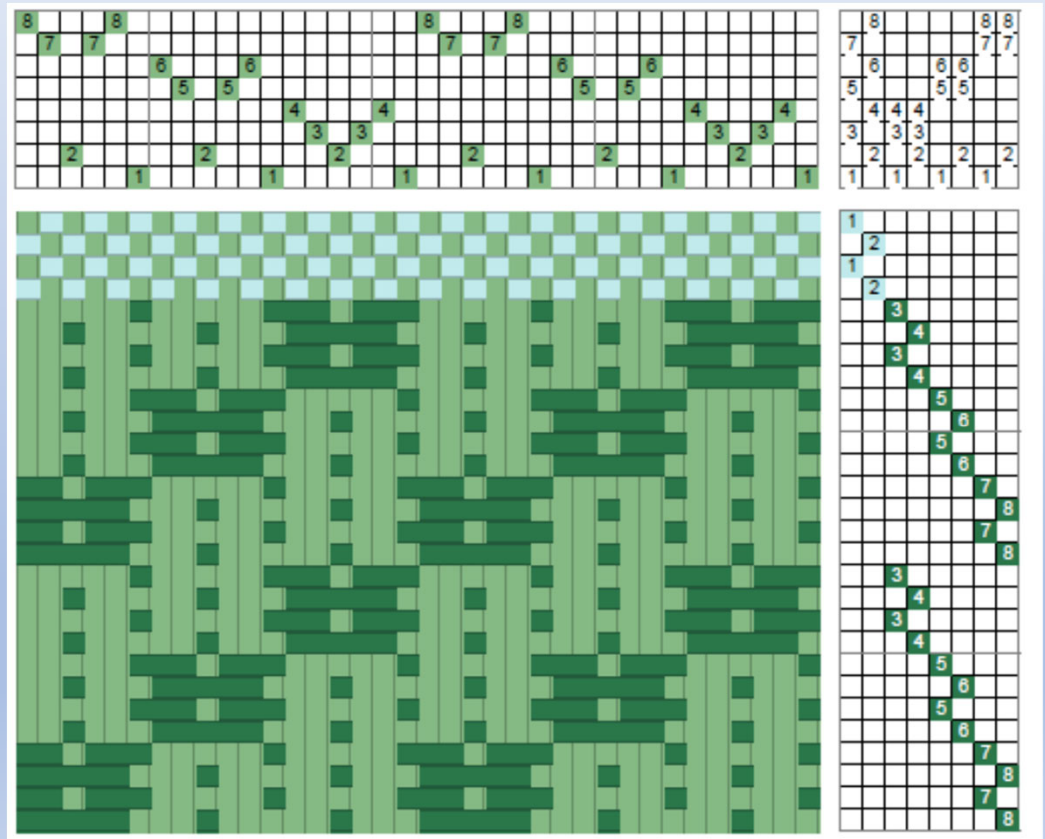
# Double, Unpaired Two-Tie Unit Weave, 1:2 Ratio

- **Beiderwand misnomer**
  - Beiderwand is a doubleweave
  - All unit weaves called beiderwand aren't
- **No tabby possible, pseudo-basket weave formed**



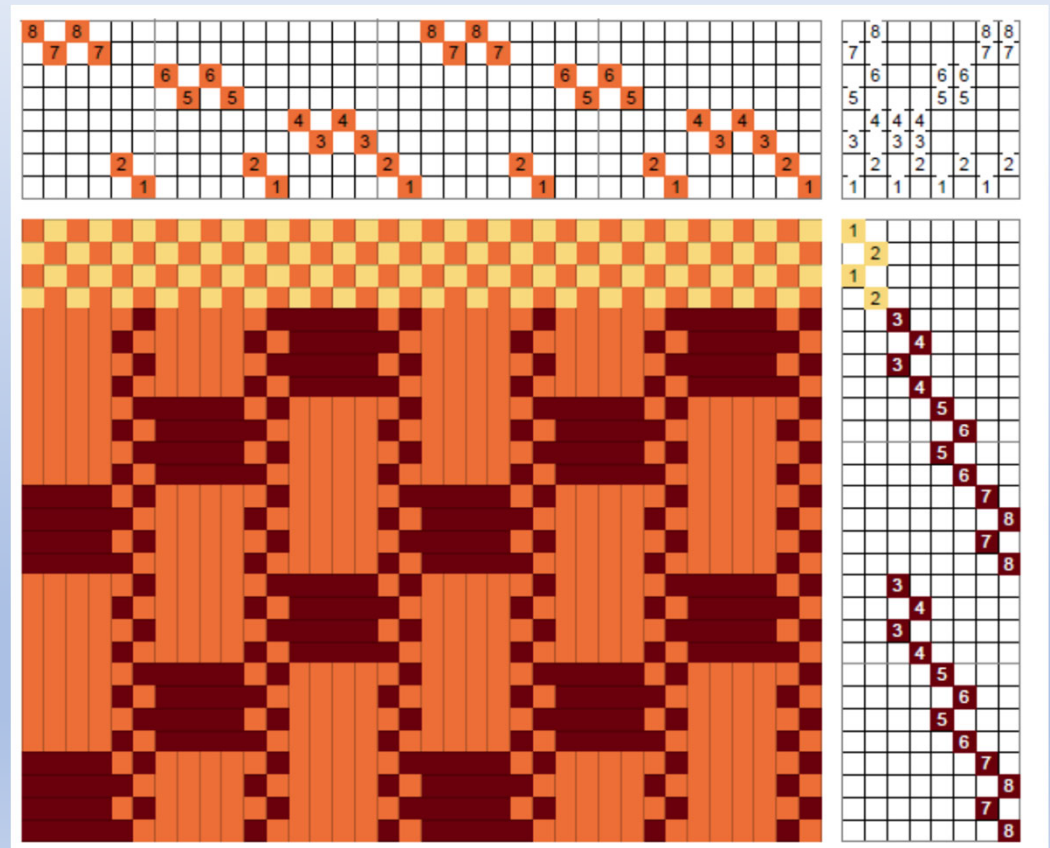
# Double, Unpaired Two-Tie Unit Weave, 1:2 Ratio

Pattern shafts in pointed  
twill order



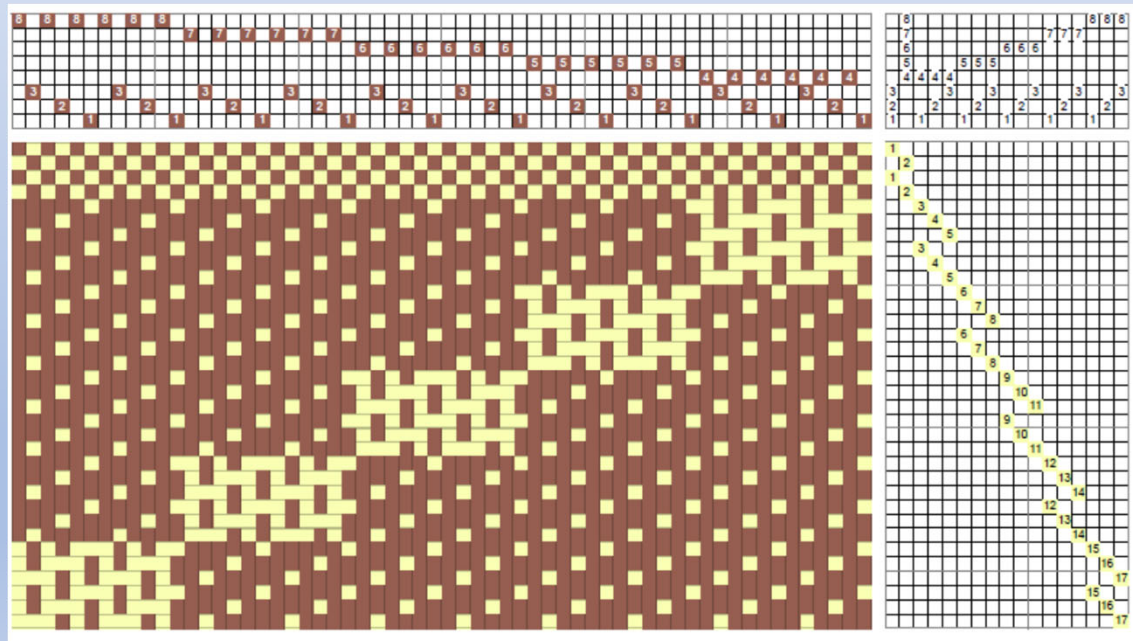
# Double, Paired Two-Tie Unit Weave, 1:2 Ratio

- Tied Latvian
- Tied-Lithuanian on same threading uses only one pattern pick, shaft 2 + pattern shaft
- Odd vs. even tabby

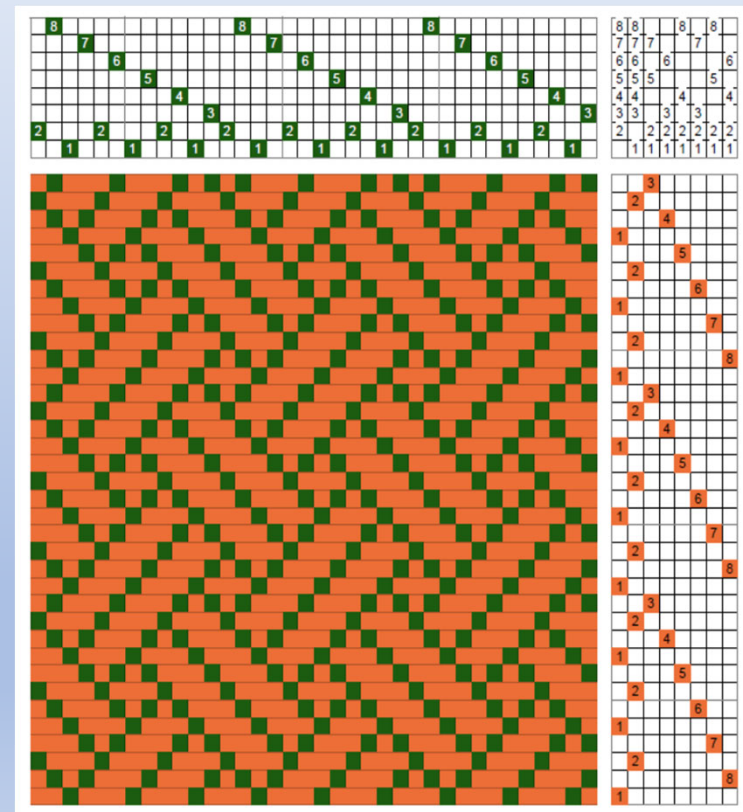
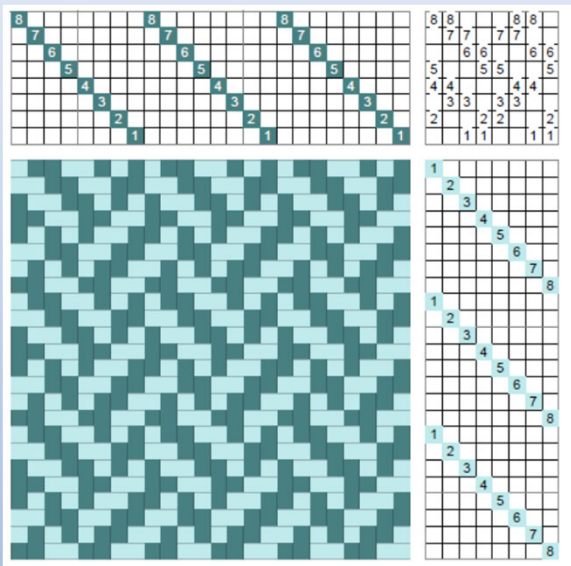


# Single, Three Unpaired Unit Weave, 1:1 ratio

“Half-Satin” name is erroneous



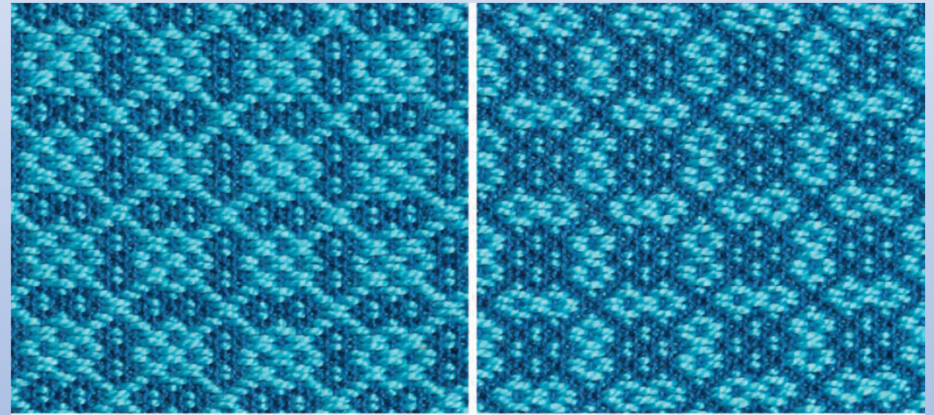
# Unit Weave Threading Used for Twills



**Unit weave threading more complex plaited twill**

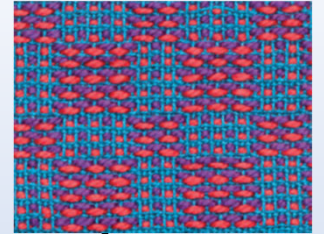
# Fabric Use

- As in supplementary weft weaves, unit weaves have two wefts, they are heftier fabrics
- Traditionally coverlets
- Afghans, pillows, other household items
- Finer wefts = finer fabrics





# This Month Challenge



- 1. Weave a unit weave, 1 set for warp, 2 sets for weft, one weft ground, one supplementary. On 4 shafts, you have two choices of threading and tons of choices for treadling.**
- 2. Do not weave true beiderwand as it does NOT belong to this group.**
- 3. Do not turn the draft; yes, I know, one weft is easier to weave but we will turn drafts separately.**
- 4. Do not use a tied weave threading to weave other structures, for example twills. Always, the fabric determines the structure.**
- 5. Unsure as to whether your choice is a unit weave? Ask!**



# References

- **Donna Sullivan's *Summer & Winter A Weave for All Seasons* 1991, Interweave Press**
- **Carol Strickler *A Weaver's Book of 8-Shaft Patterns from the Friends of Handwoven*, Interweave Press**
- **My Right from the Start articles in SS&D**
  - **Overshot and Summer-and-Winter - Compare and Contrast, 145: 21-26, Winter 2005/6**
  - **Examining a Tied Unit Weave, 198:11-16, Summer 2019**
  - **A New Dimension to a Tied Weave 199: 11-17, Fall 2019**

**Questions?**